



Nativity Preparatory Academy Re-Opening Plan 2020-2021

Guiding Principles

01

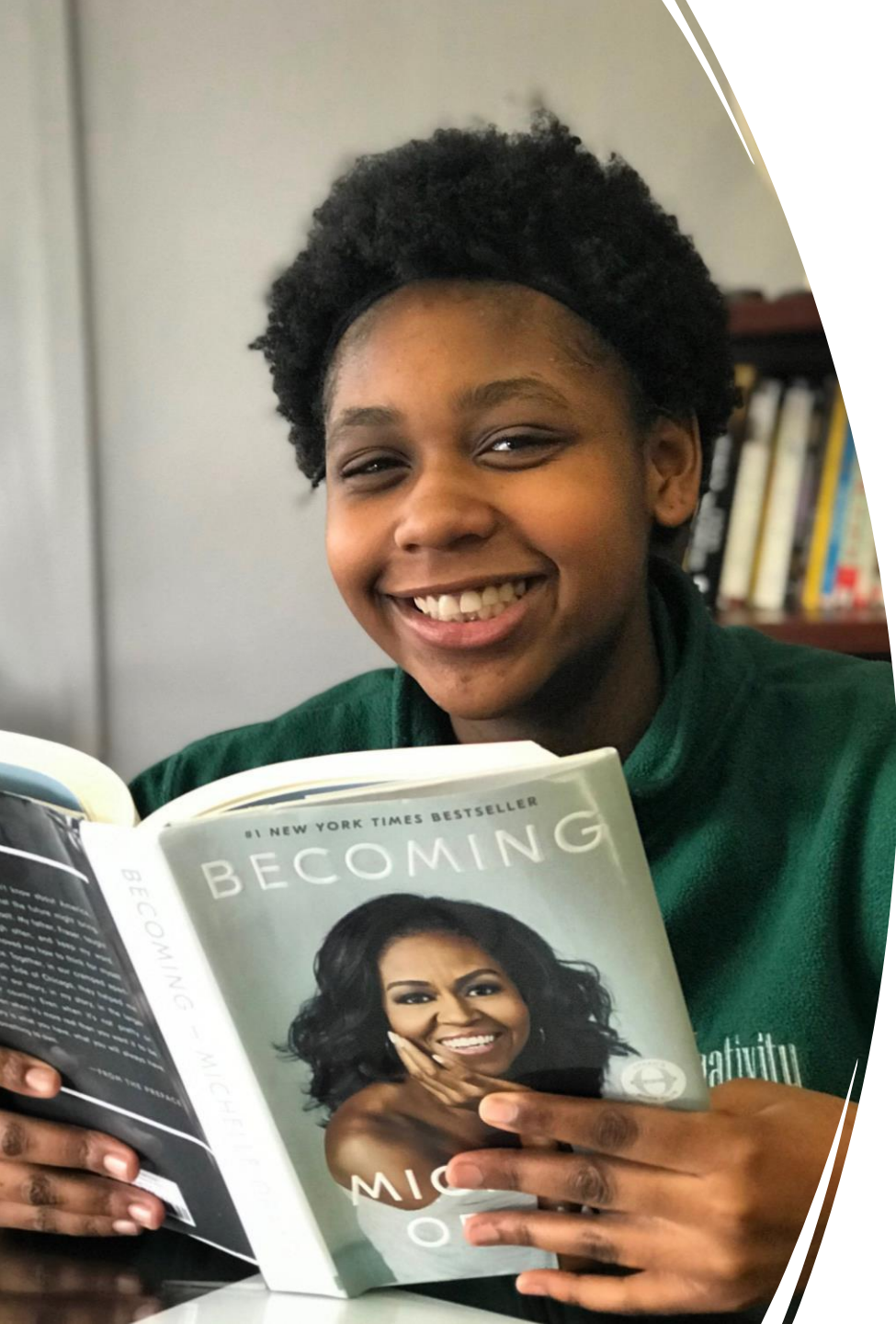
All decisions have the health and safety of students, families, and staff as the primary focus.

02

Because of the challenges faced during School at Home, it is Nativity's goal to offer safe, in-person learning for all students.

03

Students' holistic (mind and body) well-being is our number one concern.

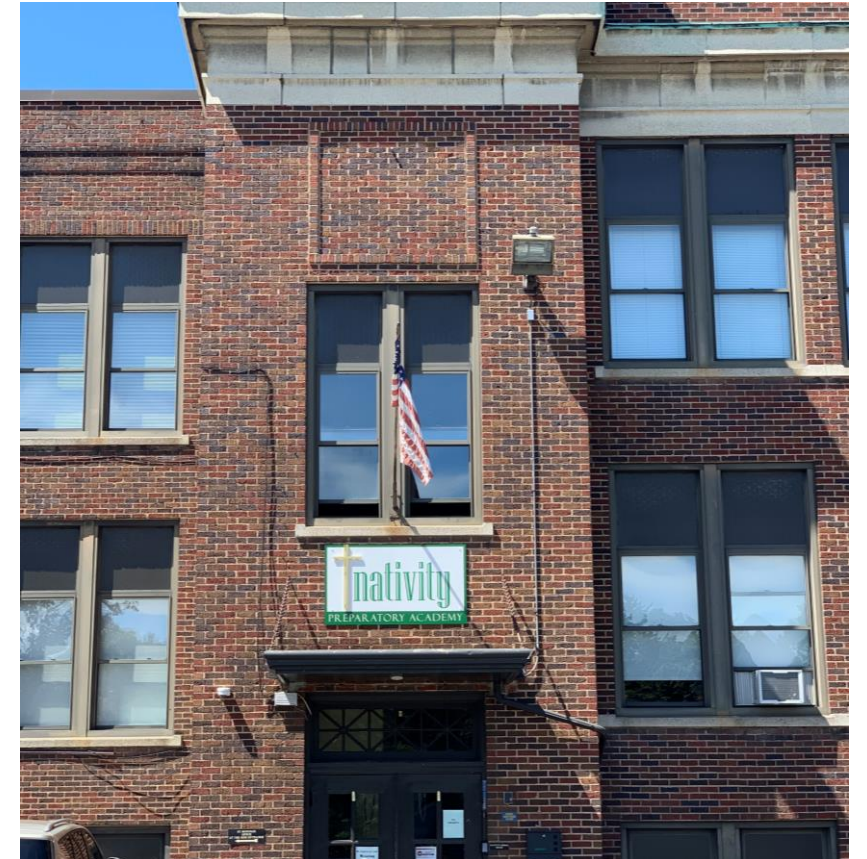


In-Person Instruction – We can't wait to see you!

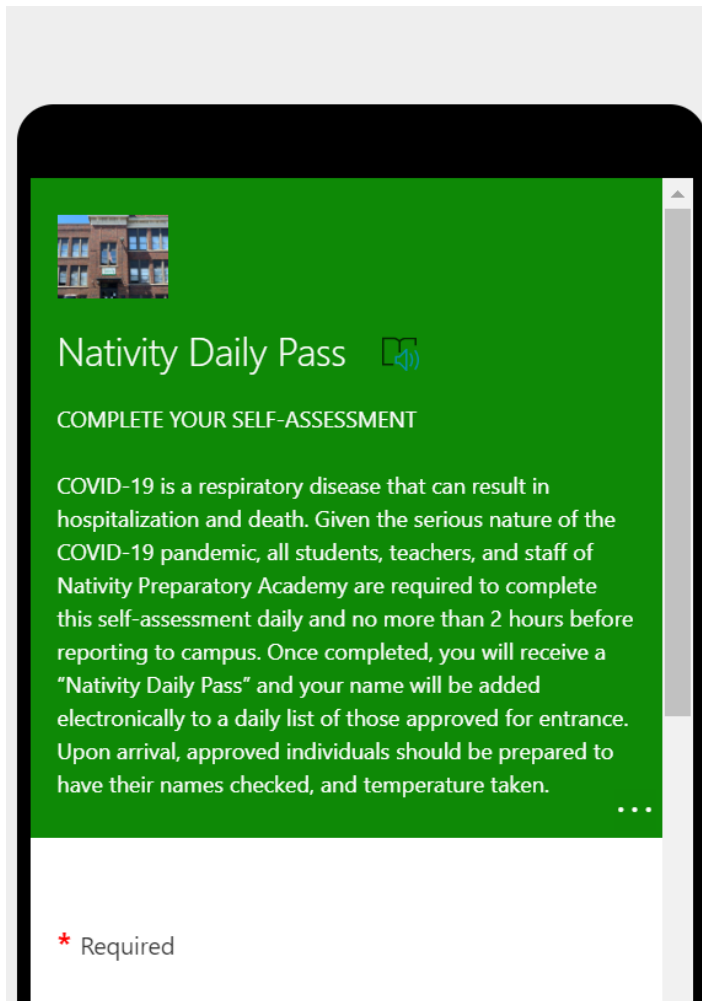
In September, we will resume full-time, in-person learning for all students.

Academic Day

- School days will begin at 7:30am and will end at 2:00pm.
- Transportation is scheduled to be provided through the Rochester City School District.
- Students will have all core subjects (Math, ELA, Social Studies, Science, Health/Wellness) each day in a grade level classroom (no switching rooms).
- Students will have religion, study hall, and Social Emotional Learning (SEL) on a rotating basis (2x/week).



Daily Health Screening



The screenshot shows a digital form titled "Nativity Daily Pass" with a green background. At the top left is a small image of a school building. Below the title is a small icon of a document with a checkmark. The main heading is "COMPLETE YOUR SELF-ASSESSMENT". The text explains that COVID-19 is a respiratory disease and that all students, teachers, and staff are required to complete this self-assessment daily, no more than 2 hours before reporting to campus. It states that upon completion, users will receive a "Nativity Daily Pass" and their name will be added to a daily list of those approved for entrance. It also mentions that upon arrival, approved individuals should be prepared to have their names checked and temperature taken. There is a small red asterisk icon at the bottom left of the form, and a small red asterisk icon at the bottom left of the page.

Nativity Daily Pass

COMPLETE YOUR SELF-ASSESSMENT

COVID-19 is a respiratory disease that can result in hospitalization and death. Given the serious nature of the COVID-19 pandemic, all students, teachers, and staff of Nativity Preparatory Academy are required to complete this self-assessment daily and no more than 2 hours before reporting to campus. Once completed, you will receive a "Nativity Daily Pass" and your name will be added electronically to a daily list of those approved for entrance. Upon arrival, approved individuals should be prepared to have their names checked, and temperature taken.

* Required

- *All students and staff will be required to complete a Daily Pass Questionnaire at home prior to school each day.*
- The Daily Pass is accessible on students' school-issued Chromebooks, or on a phone or tablet.
- The Daily Pass will include reporting on a temperature check, covid-19 symptoms, and any known contact with individuals suspected or confirmed to have covid-19.
- The Daily Pass will lead to one of three responses: Green (come to school), Yellow (come to school but extra screening), or Red (do not come to school).
- When students arrive to school, they will have an additional temperature check to verify the Daily Pass.

Class Structure

- Health and safety are top concerns.
- All desks will be socially distanced 6ft. in all directions.
- Classroom capacity is limited to 16 students per classroom. Each grade will have one main classroom and a break room.
- When class size is above room capacity, both the classroom and break room will be used. In that case, teachers will alternate between the classroom and break room for teaching. Students in the alternate room will see the teacher through livestream with supervision from support staff and using Nativity's new OWL virtual classroom technology.



Social Emotional Learning



All students in all grades will take part in weekly SEL lessons with the Director of Student Support.



Students will be screened for increased emotional or behavioral needs.



Students will have the opportunity to take part in small group or individual counseling, as necessary.



For students or families with higher levels of support needed, referrals for outside services will be made.



Physical Education



Physical Education will offer sports characterized as low or moderate-risk.



P.E. will take place daily, but only 1-2 days per week will be sports and activities.



Other days will include mindfulness, health education, and nutrition.

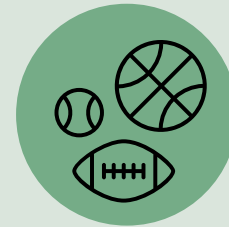
Enrichment and Activities



With our shortened school day, all enrichment will take place virtually using school-issued Chromebooks and Google Meet.



Tutoring and afternoon support will take place virtually using school-issued Chromebooks and Google Meet.



All athletics will follow guidance from NYSED, NYSPHSAA, CDC, and county health departments.

- Currently, we do not anticipate interscholastic sports taking place this year

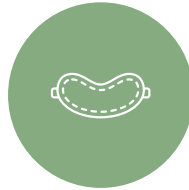


Performing Arts will follow all guidance from the CDC when such activities are allowed to begin.

Breakfast and Lunch



Students will have an assigned seat in the cafeteria, 6ft in all directions from all other students.



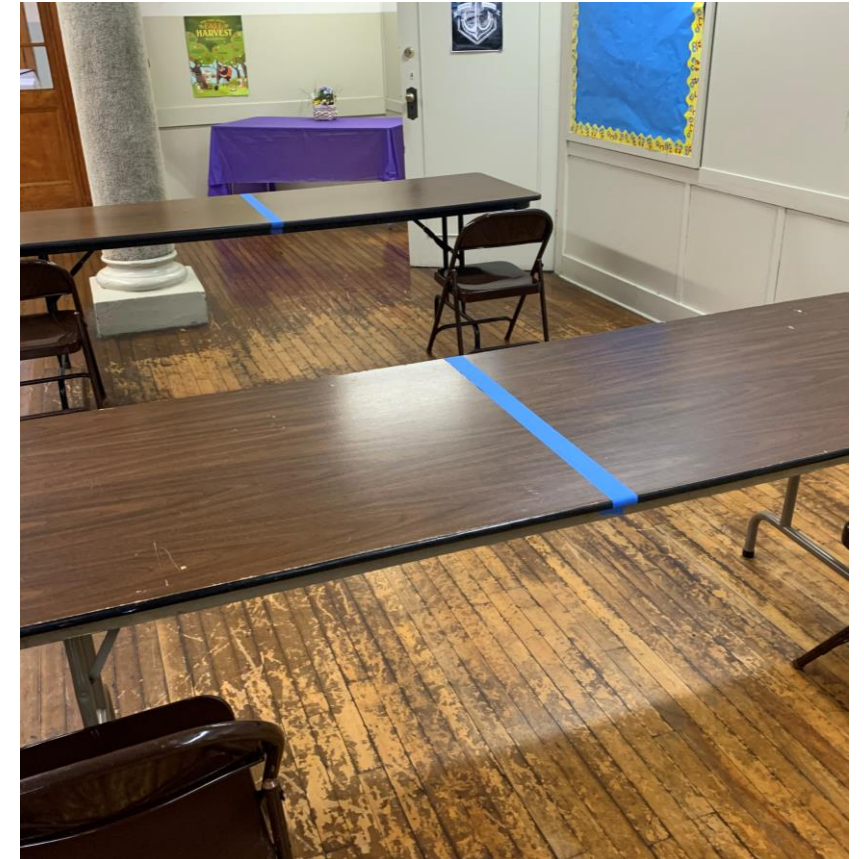
All students will sit facing the same direction and will remove their masks to eat only once seated at their assigned place.



Our food service provider, Julia K, will prepare grab and go breakfasts that students will pick up when they get to school in the morning, after sanitizing their hands and entering the cafeteria.


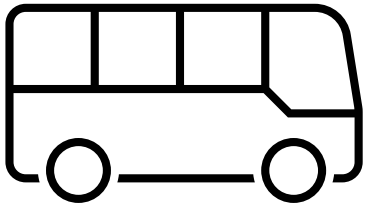


Lunch will be brought to student assigned seats in the cafeterias by staff so that students do not need to go through the cafeteria lines.



Transportation

As a nonpublic school dependent on local school districts for transportation, we do not have any direct oversight over school buses



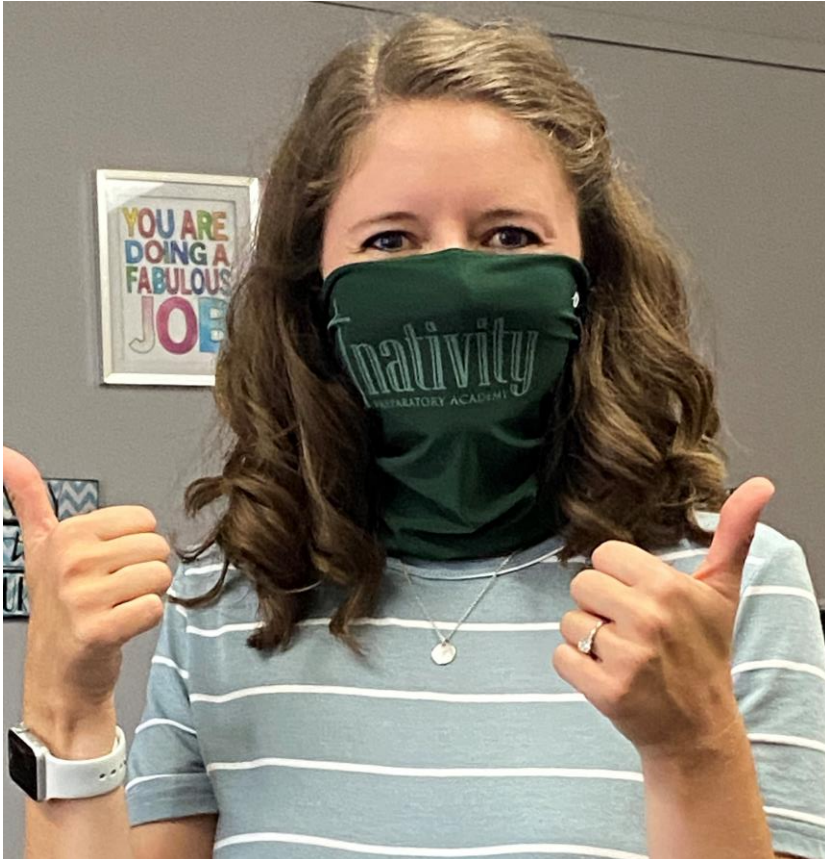
We will, however, communicate RCSD transportation rules to families and reinforce the following of rules on the buses for all students

Health and Safety

Safely Returning
to Nativity



Masks/Face Coverings



- Masks or face coverings are always required , even when social distancing can be maintained.
- There will be safe opportunities to take mask breaks throughout the day.
- One (1) mask will be provided at no cost for all students and staff for in-school use.
- Students must wear a mask from home (no writing or inappropriate graphics) on the bus. They will change into their school mask upon entering Nativity. They will change into their home mask again before getting on the afternoon bus.
- Student school masks will be laundered each night. Personal masks should also be washed frequently.

Screening

- All students and staff will be screened with a temperature check before entering the building.
- Before arriving at school, all students and/or parents must complete their Daily Pass screening tool.
- *No one will be allowed in the building without BOTH a temperature check, AND a completed Daily Pass.*





Social Distancing



- Floor spots have been laid to indicate 6ft. Distance in hallways and classrooms.
- Traffic will flow in one direction per staircase.
- All desks and tables are spaced 6ft. in all directions.
- Self-contained classrooms will eliminate the need for passing time and hallway crowding.

Handling Potential Cases

- If there is a possible Covid-19 case, the student or staff member must leave school immediately.
 - If transportation for immediate departure is not possible, the individual will go to the isolation room (next to but separate from the new nursing office).
- The Monroe County Department of Health will be immediately notified.
- If the School Health Aide recommends testing, referral for sites will be made.
- *Nativity will have a full-time School Health Aide on campus to handle all potential cases, as well as normal student injuries and illnesses.*

Hygiene

- Regular handwashing and posted reminders will be required and follow all guidelines in the CDC guidance.
- Information will be sent to families to ensure home reinforcement of hygiene, including the regular laundering of all uniform parts.
- Nativity has installed touchless bottle-filling stations to replace all drinking fountains.
- All towel dispensers, soap dispensers, and sinks are being outfitted with automatic features.
- Alcohol-based hand sanitizer in touchless containers has been installed in each hallway and floor, as well as by the main entrance to school



Cleaning and Disinfecting



The facility will be cleaned and disinfected daily, including a thorough second-shift of sanitizing each afternoon, a main reason for our 2:00pm dismissal time.



All spaces will be cleaned throughout the day according to Department of Health and CDC regulations and protocols using proper cleaning agents.



Student desks and supplies will be individually assigned and maintained to minimize surface exposure and will be cleaned daily.



Student masks will be cleaned each afternoon (students **MUST** wear a personal mask on the bus) using Nativity's new laundry room.

Alternative and Contingency Plans

Distance Learning Option

- **Nativity's first choice for instruction is in person.** However, the school recognizes that each family has unique needs and may require a distance learning option.
- Distance Learning will be an option for the first semester of the 2020-2021 school year, with a plan to determine whether it will be offered second semester closer to the winter.
 - *Decisions to opt-into distance learning will be FINAL for a full quarter before the chance to change to in-person instruction.*
- Instruction for students who are opting for Distance Learning will be synchronous (at the same time as classes for students at school), and **students will still be held to the same academic standard as those in school.**
 - Students must be in all classes, 7:30am-2:00pm regardless of if they are in-person or online.
- *Families opting for Distance Learning must have both the student and a parent or guardian sign the Distance Learning Contract by August 27th.*

Contingency Plan for Ill Students

If a student becomes ill and is unable to attend in-person classes, that student will automatically be added to our Distance Learning program.



All coursework will be easily accessible on school-issued Chromebooks



Students who can complete distance learning during their absence are expected to keep up with all coursework.

If a student is too ill to participate in distance learning, administrators will work with the student's family to create an individual plan for making up missed instruction.

Pivoting to Distance Learning for All

If required, we will move to Distance Learning for all students.

This will be different than our spring School at Home in a few keyways:

- Students will attend all classes each day, just as they would during an in-person day.
- School will run full academic days, 7:30am-2:00pm Monday-Friday, with a break for lunch
- Teachers will, if possible, teach from their classrooms, utilizing Nativity's new OWL Virtual Technology to enhance engagement

**We are excited to
welcome you back to
Nativity in September!**

